

CTO & CHIP Vall' Academy 2026

Dear friends, The CTO & CHIP Vall'Academy is reaching its 8th year since its birth, with several workshops each year, more than 25 international experts, more than 150 attendees. Those who have attended know well that this is not just another meeting...

PRACTICAL

We have maintained a very PRACTICAL hands-on approach

INTERACTIVE

Everything can be ASKED! Every strategy can be QUESTIONED!

HUMBLE

HUMBLE face to face discussion with the greatest INTERNATIONAL EXPERTS

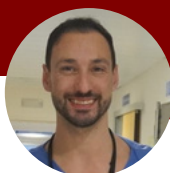
COLLABORATIVE

Everyone is here for both, LEARNING & TEACHING!

The 2026 edition includes 6 of the best international experts that also represent the future in the CTO & CHIP field... Don't miss it!!!

COURSE DIRECTORS

Dr. Ignacio Amat-Santos



Chief of the Cardiac Catheterization & Interventional Cardiology Unit
Cardiology Department - Institute of Heart Sciences (ICICOR).
Hospital Clínico Universitario de Valladolid (Spain)

Dr. Jorge Sanz



Interventional Cardiologist at the Hospital
La Fe in Valencia (Spain)

February 26th & 27th

Dra. Anja Oksens & (Norway)
Dra. Margaret B McEntegart (UK)
Dr. Alexander Nap (Amsterdam)



Dr. Anja Øksnes is an Interventional Cardiologist at the Haukeland University Hospital, Bergen in Norway. Her expertise is in CTOs, as well as CHIP, intravascular imaging, TAVI, and research. Currently running an international TRIAL on Complex CTO (InvestCTO study). She is also a member of the EuroCTOclub, EAPCI and 4C



Dr. Margaret McEntegart serves as the Director of Complex PCI and CTO programmes at Columbia University Irving Medical Center, New York, US. She also holds the role of Director of Cardiac Catheterization Laboratories at Columbia University Irving Medical Center / New York-Presbyterian Hospital.

Before joining Columbia, Dr. McEntegart served as a consultant interventional cardiologist at Golden Jubilee National Hospital (UK), where she played a pivotal role in establishing and leading the CTO and Complex PCI Programme.



Alexander Nap is an interventional cardiologist at the VU University Medical Center in Amsterdam with a specialization in complex percutaneous coronary interventions (PCI), particularly Chronic Total Occlusion (CTO) procedures. His curriculum vitae includes a focus on research in atherosclerosis and ischemic syndromes, and he is involved in teaching and directing events like EuroACTOS 2025 and the CTO Fundamentals Live 2016.

June 22nd & 23rd

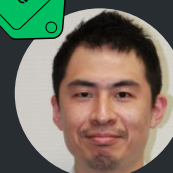
Dr. Prongo Bilal Iqbal (Canada)



Dr. Bilal Iqbal is an Interventional Cardiologist at the Royal Jubilee Hospital, Victoria, BC. He has trained in both UK and Canada and served as a Consultant Interventional Cardiologist at the Royal Brompton and Harefield Hospitals in London, UK prior to his move to Canada in 2015. He holds an academic appointment as Professor of Medical Sciences at the University of Victoria, Canada. He is a high-volume complex PCI operator with a specialist interest in CTO intervention. His research interests include the molecular mechanisms of thrombosis, developing novel PCI/CTO techniques, rotational atherectomy and the utility of transcatheter pacing in complex PCI.

September 28th & 29th

Dr. Shunsuke Matsuno (Japan)
Dr. Kambis Mashayekhi (Germany)



Dr. Kambis Mashayekhi is Deputy Medical Director, General and Interventional Cardiology Department of Cardiology and Angiology II University Heartcenter Freiburg – Bad Krozingen, DE.

Dr. Kambis Mashayekhi became a member of the EuroCTO Club and is a world-renowned CTO specialist. His main focus is on training in complex PCI. He is course co-director of MLCTO, Euro-CTO and board member of EuroPCR.

Dr. Shunsuke Matsuno, MD is an interventional cardiologist and the manager of Cardiovascular Medicine Department at The Cardiovascular Institute Hospital, Tokyo, Japan. He undertook cardiology training in The Cardiovascular Institute Hospital. He is the coronary course director of CCT (Complex Cardiovascular Therapeutics) and a fellow of the Asia-Pacific CTO (APCTO) club. His major interventional interests are treatment for chronic total coronary occlusions, complex coronary lesions.

